

2018 STUDENT MISSIONS MEETING

*And I heard the voice of the Lord saying,
“Whom shall I send, and who will go for us?”
Then I said, “Here I am! Send me.”*

-Isaiah 6:8

WHY GO ON A MISSION TRIP?

- Provides a Spiritual Experience
 - Live as a Friend | Love as a Servant
 - Learn as a Follower | Lead as a Guide
- Opportunity to grow in your faith
- Share God's love and compassion

QUICK DETAILS FOR EACH TRIP

The Valley

- Participants:
 - Current 5th-8th Grade
- Mentors:
 - Current 11th-12th Grade
- Chaperones:
 - Adults
- When:
 - June 10th-16th
- Cost:
 - P: \$350
 - M: \$150
 - C: \$225

Our Saviour NY

- Participants:
 - Current 9th-12th Grade
- Mentors:
 - Current College
- Chaperones:
 - Adults
- When:
 - June 24th-July 1st
- Cost:
 - P: \$450
 - M: \$150
 - C: \$225

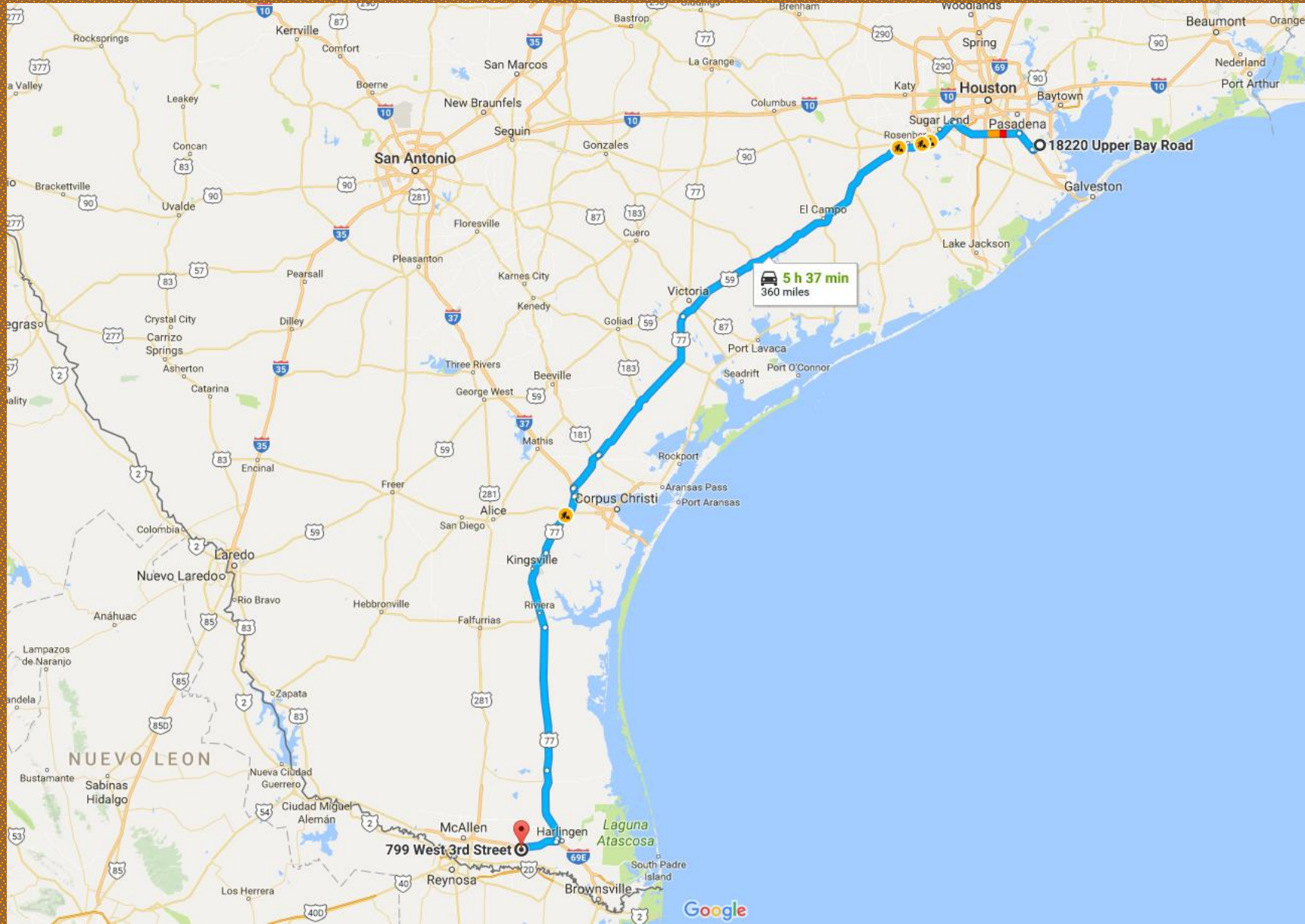
Guatemala

- Participants:
 - High School-College
- Chaperones:
 - Adults
- When:
 - March 10th-18th
- Cost:
 - \$1500

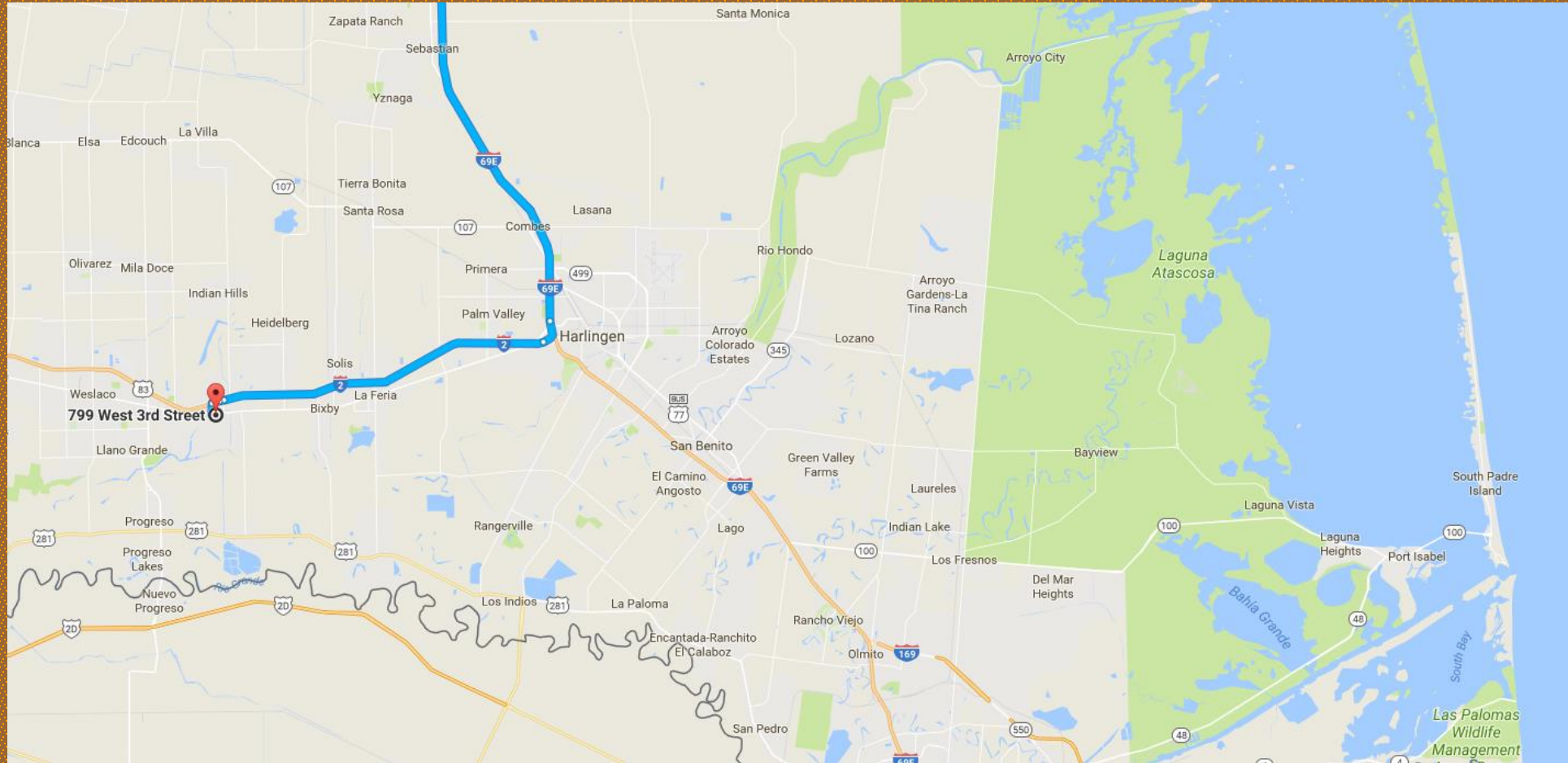


Valley Mission Trip

Where Are We Going?

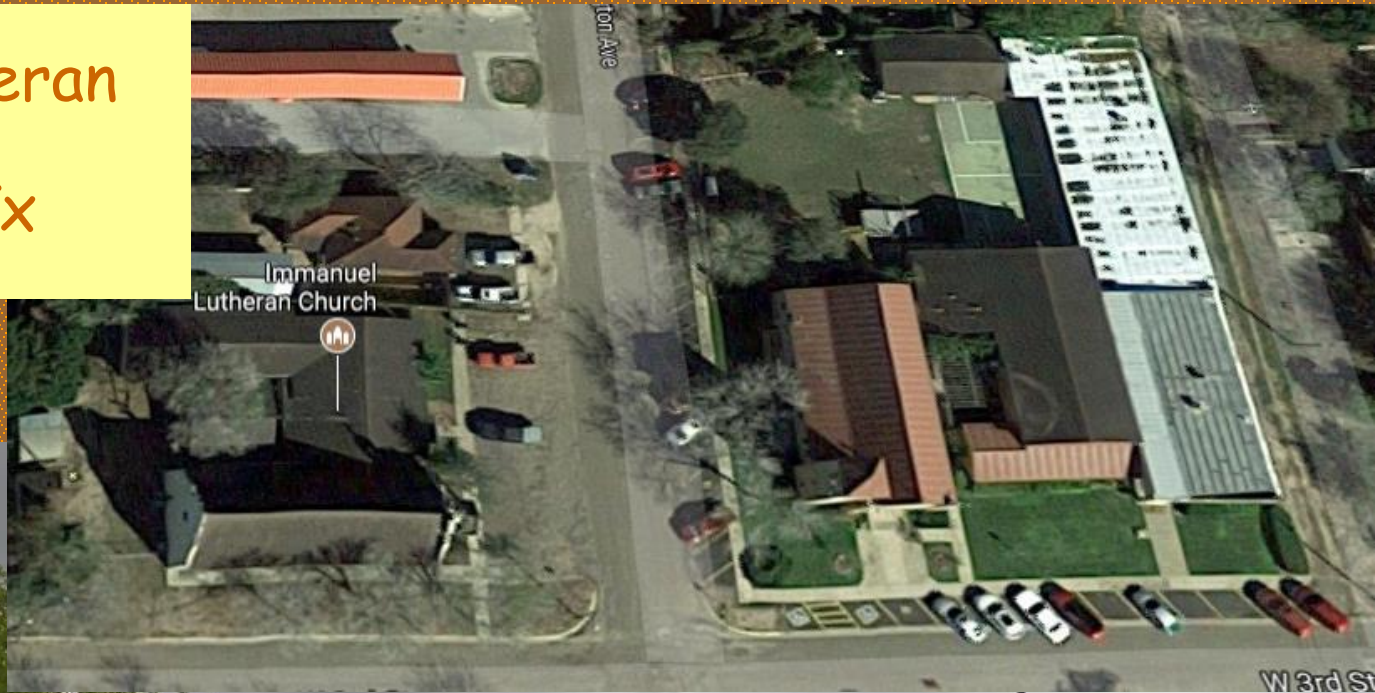


Where Are We Going?



Where Will We Stay?

Immanuel Lutheran
Mercedes, Tx



What Work Will We Do?

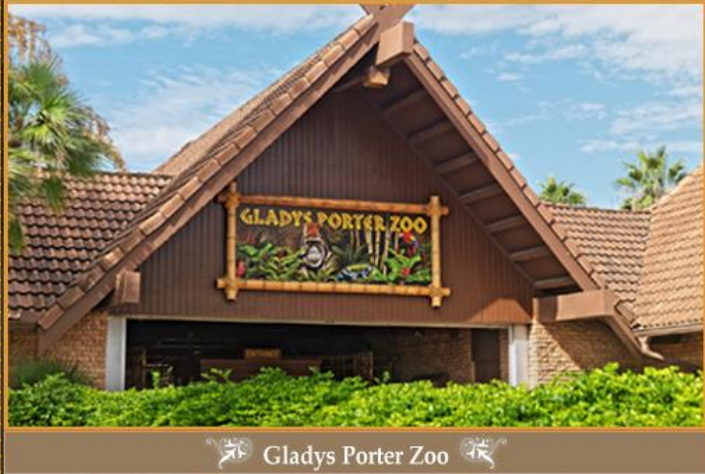
Home Repairs in Mercedes area
Possibly a VBS Day



Worship and Devotions



Excursions



Our Trip Schedule

JUNE 2018						
Sunday	Monday	Tuesday	Wednesday	Thursday	Friday	Saturday
						2
3	4				8	9
10	11	12	13	14	15	16
17	18	19	20	21	22	23
24	25	26	27	28	29	30

Leave Sunday, June 10
Return Saturday, June 16

Trip Details

30 Students (5th-8th graders),

4 High School Mentors

8 Adult Chaperones

\$ 100 Deposit

Registration:

\$ 350 - Register by March 4th

\$ 450 - Register after March 4th

Meeting Schedule

2018

January '18						
Su	M	Tu	W	Th	F	Sa
	1	2	3	4	5	6
7	8	9	10	11	12	13
14	15	16	17	18	19	20
21	22	23	24	25	26	27
28	29	30	31			

February '18						
Su	M	Tu	W	Th	F	Sa
				1	2	3
4	5	6	7	8	9	10
11	12	13	14	15	16	17
18	19	20	21	22	23	24
25	26	27	28			

March '18						
Su	M	Tu	W	Th	F	Sa
				1	2	3
4	5	6	7	8	9	10
11	12	13	14	15	16	17
18	19	20	21	22	23	24
25	26	27	28	29	30	31

April '18						
Su	M	Tu	W	Th	F	Sa
1	2	3	4	5	6	7
8	9	10	11	12	13	14
15	16	17	18	19	20	21
22	23	24	25	26	27	28
29	30					

May '18						
Su	M	Tu	W	Th	F	Sa
		1	2	3	4	5
6	7	8	9	10	11	12
13	14	15	16	17	18	19
20	21	22	23	24	25	26
27	28	29	30	31		

June '18						
Su	M	Tu	W	Th	F	Sa
					1	2
3	4	5	6	7	8	9
10	11	12	13	14	15	16
17	18	19	20	21	22	23
24	25	26	27	28	29	30

An aerial, high-angle photograph of a dense urban skyline, likely New York City. The image shows a vast array of skyscrapers and high-rise buildings, packed closely together. The perspective is from a high vantage point, looking down on the city. The lighting is somewhat dim, suggesting an overcast day or late afternoon. The overall tone is monochromatic, with shades of grey and black, except for the bright yellow text overlaid on the image.

HIGH SCHOOL MISSION TRIP

Our Saviour New York

WHERE?

- Midtown, New York City
- Our Saviour New York



TRIP SCHEDULE AND TRANSPORTATION

- June 24th-July 1st
 - Two days of travel
 - Five days of work
 - One day excursion
- Transportation
 - Flight from Houston to New York City
 - Bus from Airport to Church
 - Subway



WHAT WE DO: WORK AND WORSHIP

- Five days of work
 - Two days doing manual labor
 - Painting, building, cleaning, etc...
 - Three days spent building relationships
 - Random Acts of Kindness
 - VBS in Queens
 - Prayer walks to local homes and businesses
- Worship
 - Attend worship on Sunday and daily devotions
 - Led by OSNY and Pastor Matt Popovits



TRIP DETAILS

- Participants:
 - Current 9th-12th Grade
- Mentors:
 - Current College
- Chaperones:
 - Adults
- Cost:
 - Participant: \$450
 - Mentor: \$150
 - Chaperone: \$225



MEETING SCHEDULE

- April 15th – Welcome Meeting
- May 20th– Faith Growth/Spiritual Disciplines
- June 3rd– Final Prep Meeting

GUATEMALA MISSION TRIP



WHERE?

- Stay in La Union
- Work in Chaguiton
- Rural mountain village
- Work in the schools and church



TRIP SCHEDULE AND TRANSPORTATION

- March 10th-18th
 - Two days of travel
 - Four days of work
 - Two days for excursions
- Transportation
 - Direct flight to Guatemala City
 - Travel dates dependent on airfare price

WHAT WE DO: WORK

- Spiritual Development and Relationship Building
- Retreat Style Ministry for Students
- Light Manual Labor



TRIP DETAILS

- Participants:
 - Current High School-College
- Chaperones:
 - Adults
- Cost:
 - \$1500



MENTORS AND CHAPERONES

- For all adults, college students, and 11th and 12th grade students wanting to lead
- Applications go online October 18th
- Acceptance based on experience and trip needs
- Assignments will be made by the end of January
- No deposit due at time of application

REGISTRATION AND PAYMENTS

- Registrations go online October 18th at gdlc.org/students
- Deposits paid at time of registration
 - Middle School Trip - \$100
 - High School Trip - \$100
 - Guatemala Trip - \$250
- Remaining payments made through managedmissions.com
- Donations only received through managedmissions.com
 - No tax deductions available

QUESTIONS?

Student Blog

<https://gdlcstudentmission.wordpress.com/>